

**Shamokin Valley Railroad
Transloading Facility**
Rail Siding Location

155 Quarry Road
Coal Township, PA 17866

Shamokin Valley Railroad
Home Office

356 Priestley Avenue
Northumberland, PA 17857
www.nshr.com

SVRR Contact Information
Joe Kantz

Phone: 570.644.1374
E-mail: jkantz@nshr.com

SVRR Contact Information
Todd Hunter

Phone: 570.644.1374
E-mail: toddh@nshr.com

**Regulated Commodities
Contact Information**
Fred Heimbaugh

Phone: 570.644.1374
E-mail: fredrdms@earthlink.net

Shamokin Valley Railroad Transloading Facility



Know Your Options

Did you know you can fit up to four truckloads in one railcar?

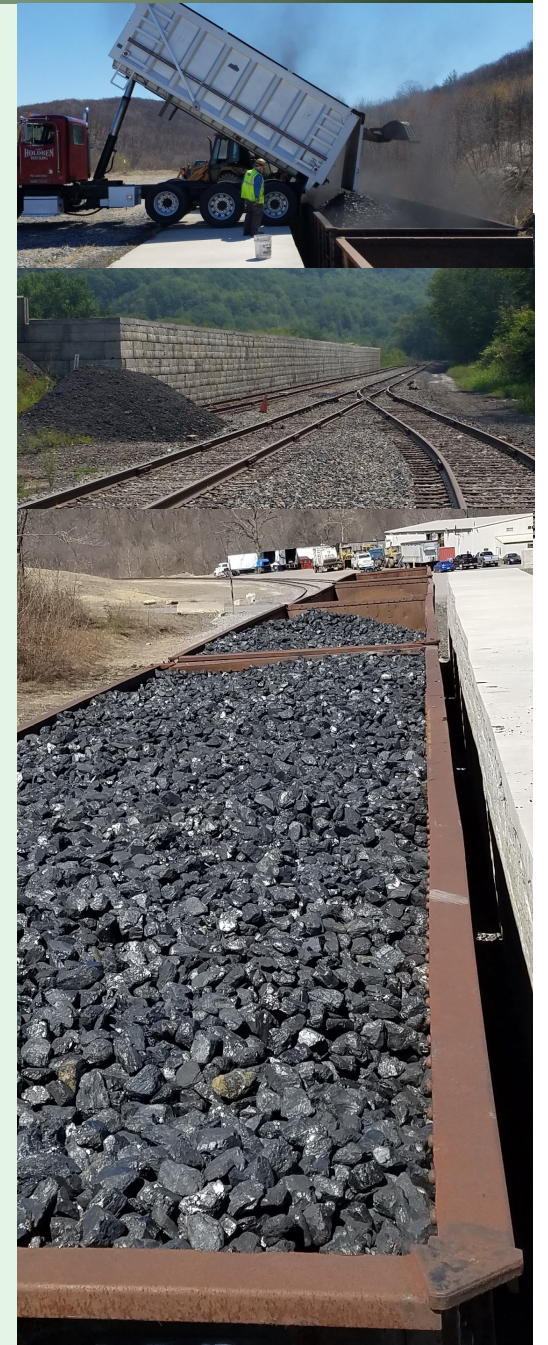
Served by the Shamokin Valley Railroad, the **Shamokin Valley Transload Facility (SVT)** is a convenient option to ship bulk materials by rail, saving your company money.

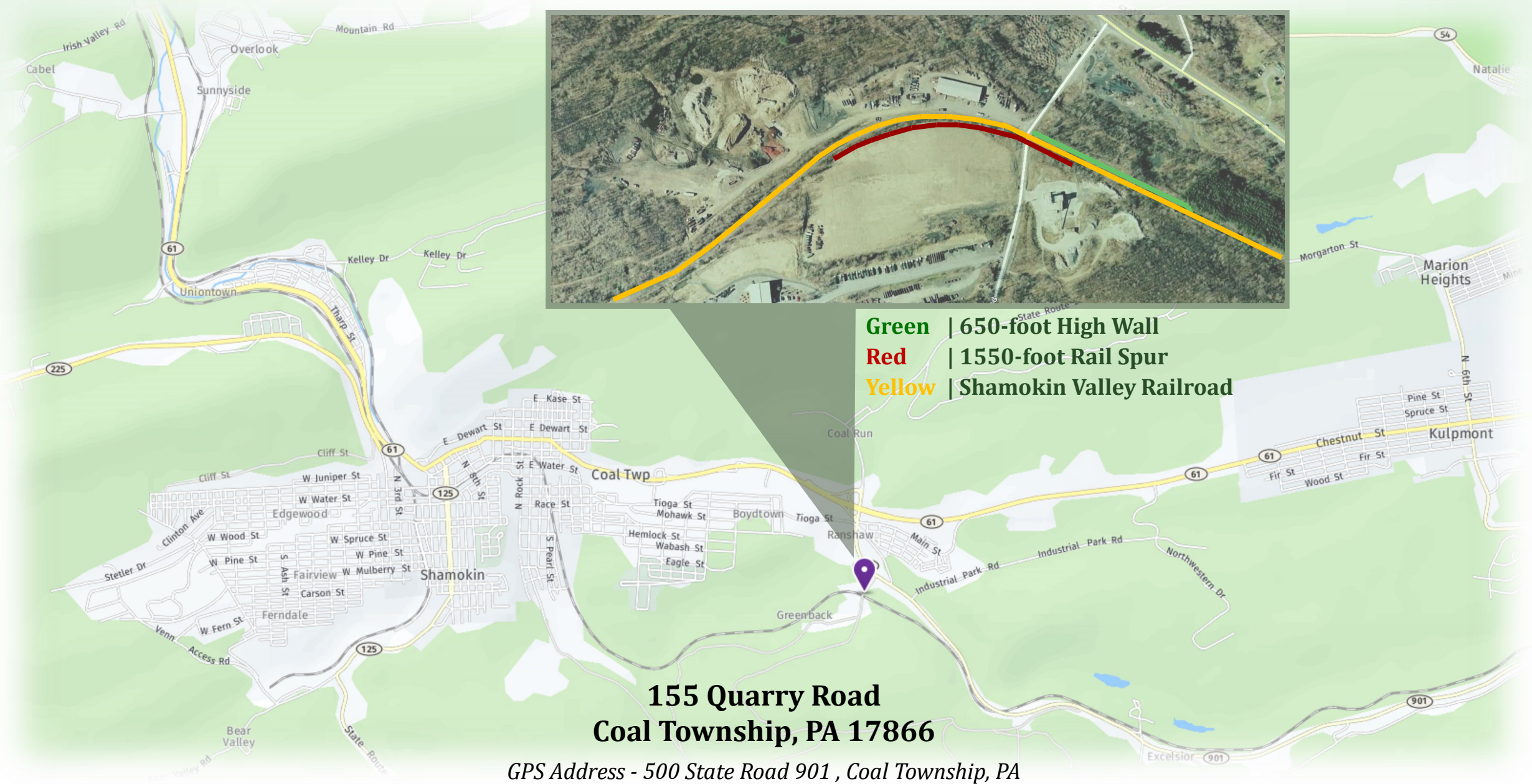
SVT features a 650-foot high wall located in Coal Township, PA, on highway PA 901, near PA 61 (2 miles) and US I-81 (14 miles). Up to ten railcars at a time can be loaded at the high wall. There is also a 1550-foot rail spur on SVT's 23 acres.

The site is preempted for oil and gas waste by the Department of Environmental Protection with PA Rail Transloading, LLC, for your use.

SVT is also the ideal for: bagged coal, loose coal, bulk coal, stone, cement, salt, aggregates, sand, mulch, pipe, wood chips, propane, water, bulk wood, oil and gas commodities, oil and gas wastes, class 7 commodities, and more..

To tour SVT or request a rate, contact us today!





- Green** | 650-foot High Wall
- Red** | 1550-foot Rail Spur
- Yellow** | Shamokin Valley Railroad

**155 Quarry Road
Coal Township, PA 17866**

GPS Address - 500 State Road 901 , Coal Township, PA