

WINFIELD STORAGE & TRANSLOAD

Conveniently located in Union County – Central Pennsylvania

ABOUT

The Winfield Storage and Transload facility is located less than one mile from the new \$700 million Central Susquehanna Valley Throughway (CSVT). This facility is ideal for the rail to truck transloading of aggregate, agricultural products, boxcars, and high & wide/dimensional loads. There are multiple conceptual plans for various transloading possibilities to meet the needs of any interested business.

FEATURES

- Five-Acre Site
- Less than 12 miles from Interstate 80, Interstate 180, Route 147, and Route 11
- Less than 50 miles from Interstate 81
- Rail dock into 3800 square foot building and 3000 square foot building
- Site owner has additional buildings and land available within miles
- Located on rail that is served by the Union County Industrial Railroad (UCIR), with connection to Norfolk Southern and Canadian Pacific
- Ability to hold up to five railcars onsite
- Rail served five days a week

LOCATION

LAT: 40°54'33.12"N
LON: 76°51'13.56"W

CONTACTS

Robert Grayston

Owner

Grayston Enterprises LLC

570.259.7161

rgrayston2@gmail.com

Todd Hunter

Chief Marketing Officer

North Shore Railroad Company

570.274.4484

toddh@nshr.com

Joe Kantz

Business & Development Manager

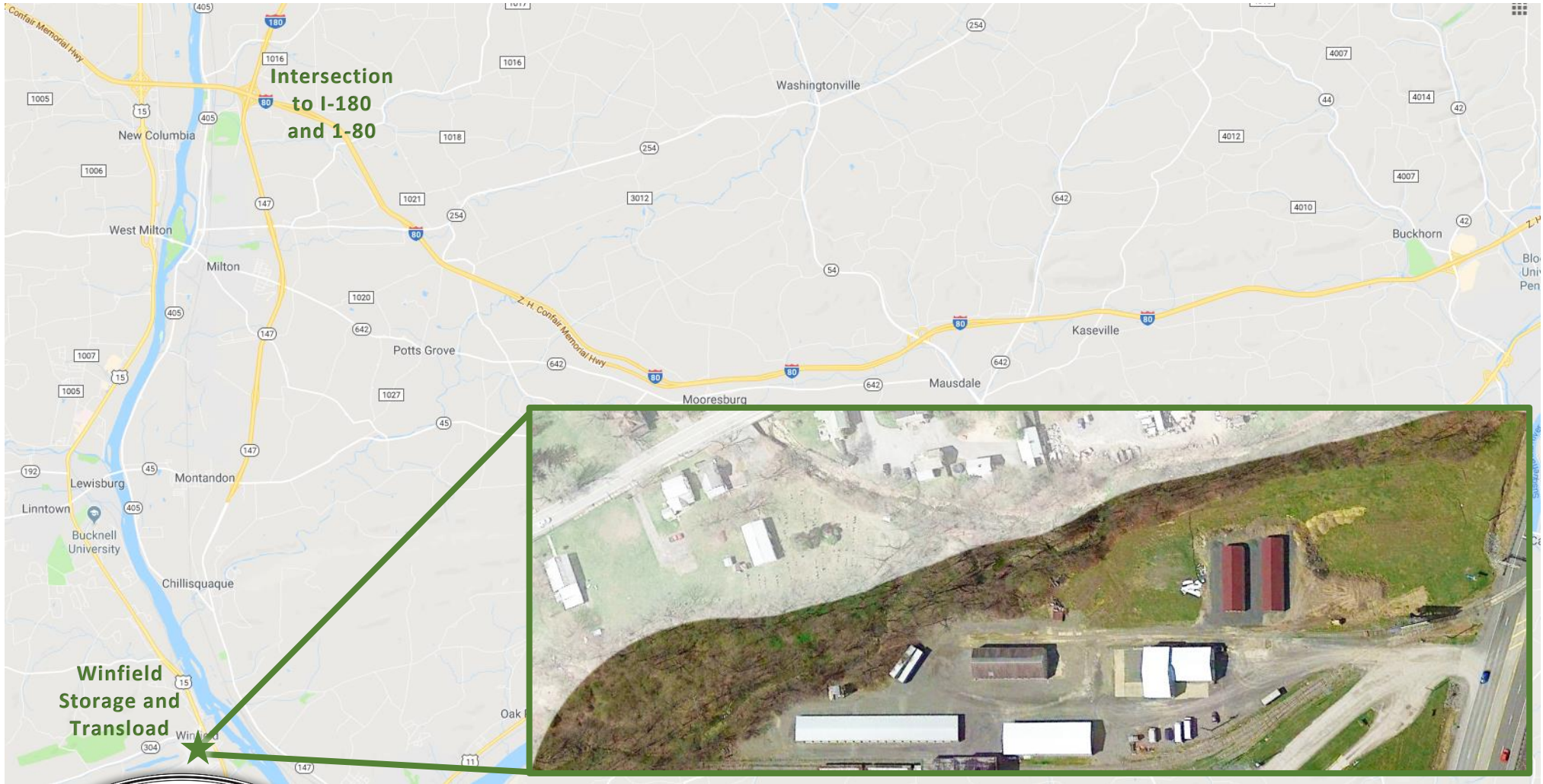
North Shore Railroad Company

570.898.4910

jkantz@nshr.com



THE WINFIELD STORAGE & TRANSLOAD IS LOCATED ON PA ROUTE 15.



A Partnership of Grayston Enterprises LLC and the Union County Industrial Railroad Company

WINFIELD
STORAGE & TRANSLOAD

